



boxcold

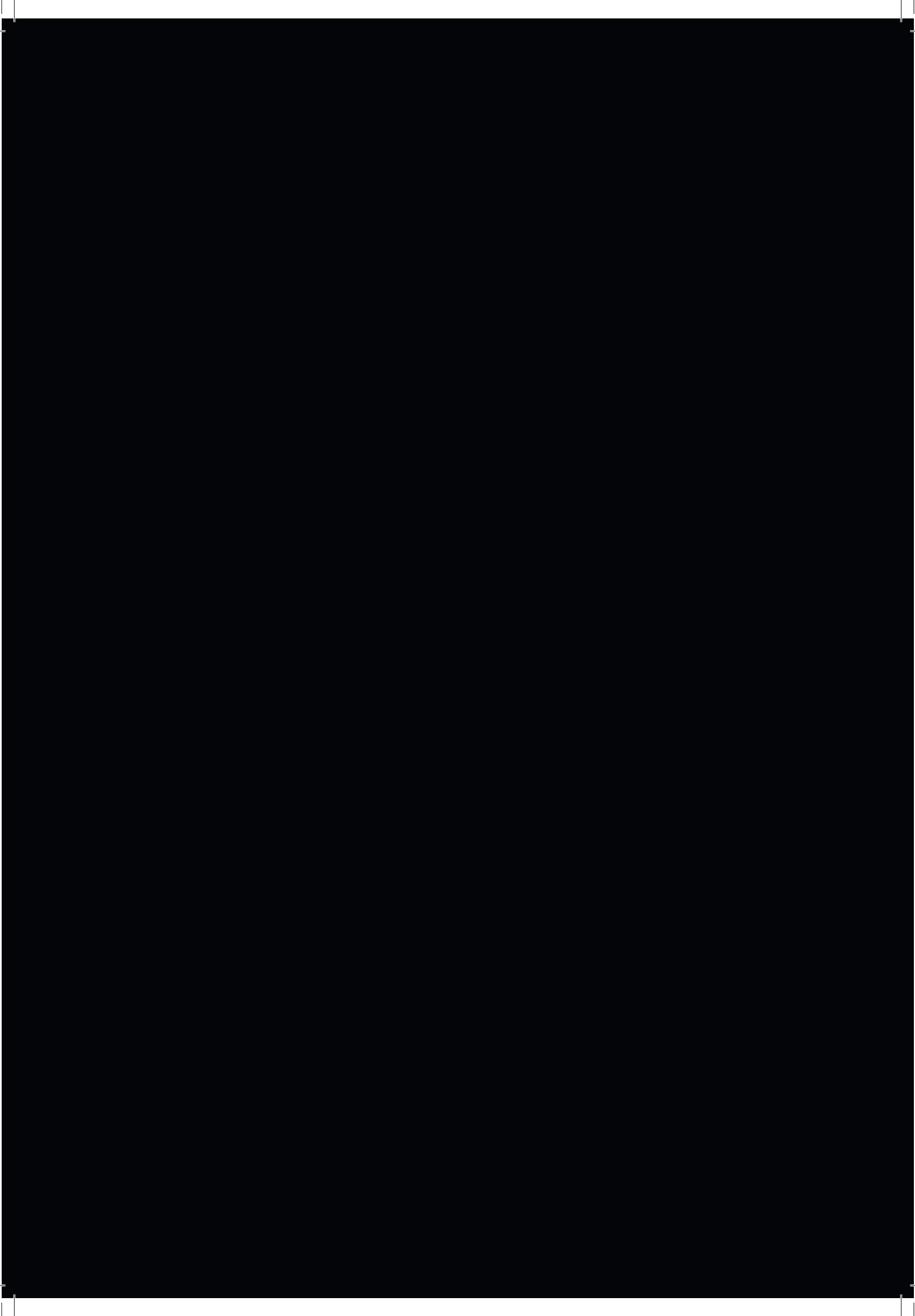
FREDDO SU MISURA

2023



Catalogue







COMPANY

Company

YOUNG AND DYNAMIC COMPANY STAFF

Boxcold experts are energetic women and men constantly working on new ideas and projects, always ready to answer to their customers' questions and requirements in a very short time also thanks to the support of modern digital communication systems and to a high-technological software. Currently, Boxcold can meet several needs requested by the global market because of the high quality and reliability of the products supplied, the ongoing investments in research and development and because of the use of the most modern technologies in full respect of the environment.

STRENGTHS

Boxcold has come a long way, a way characterized by commitment, research and passion that aims to great design and creation projects. Started as an installation and maintenance company for refrigerating units, Boxcold has grown in the last twenty years becoming a leading company worldwide in the production of commercial/industrial cold rooms concerning all the sectors of the manufacture, the transformation and the storage of both "food" and "non-food" products.

CNC MACHINING CENTRE

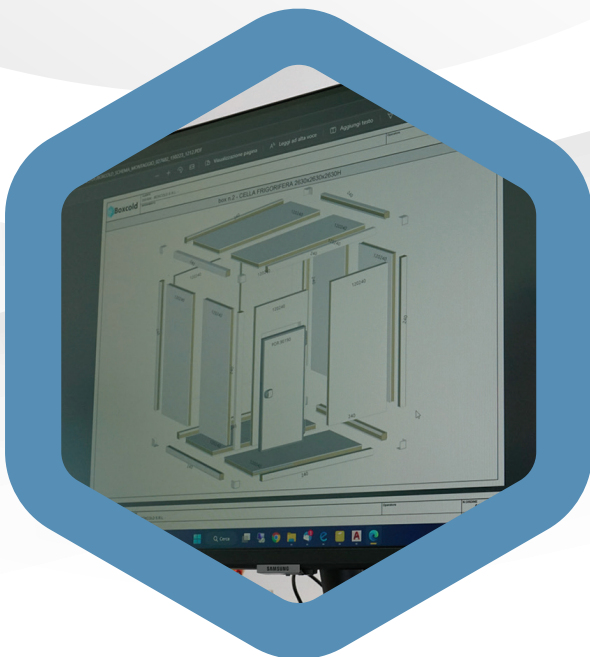
Boxcold production cycle has got an additional strength. In the standard and industrial door sector, two latest-generation numeric control CNC machining centres stand out because they are the most sophisticated in the world. They offer incredible advantages regarding the working time, reduced to the minimum, and the precise repeatability of the working process that ensures a higher and always consistent quality.

2D E 3D PROJECTS

The designers of the Boxcold technical department use the most modern solutions of 2D and 3D design software to realize products constantly innovative and of quality. They not only supply the material, but they also study and develop every technical solution that could lead to new projects.

3D CONFIGURATOR

Since 2017 Boxcold team has a brand new system completely automatized for the 3D configuration and for the quotation of the cold rooms. This configurator allows both the sales departments and the customers to realize in a simple and simultaneous way projects and offers for one or more standard and non-standard cold rooms, of different thicknesses, dimensions, complete with accessories, mobile and/or fixed dividing walls, and countless other options and solutions. This system can give a very clear idea of the final requested result, taking time to consider every type of variation.



DEDICATION
PASSION
TECHNOLOGY
PRECISION
RELIABILITY



boxcold

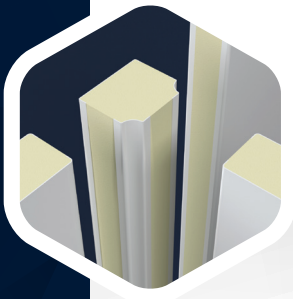
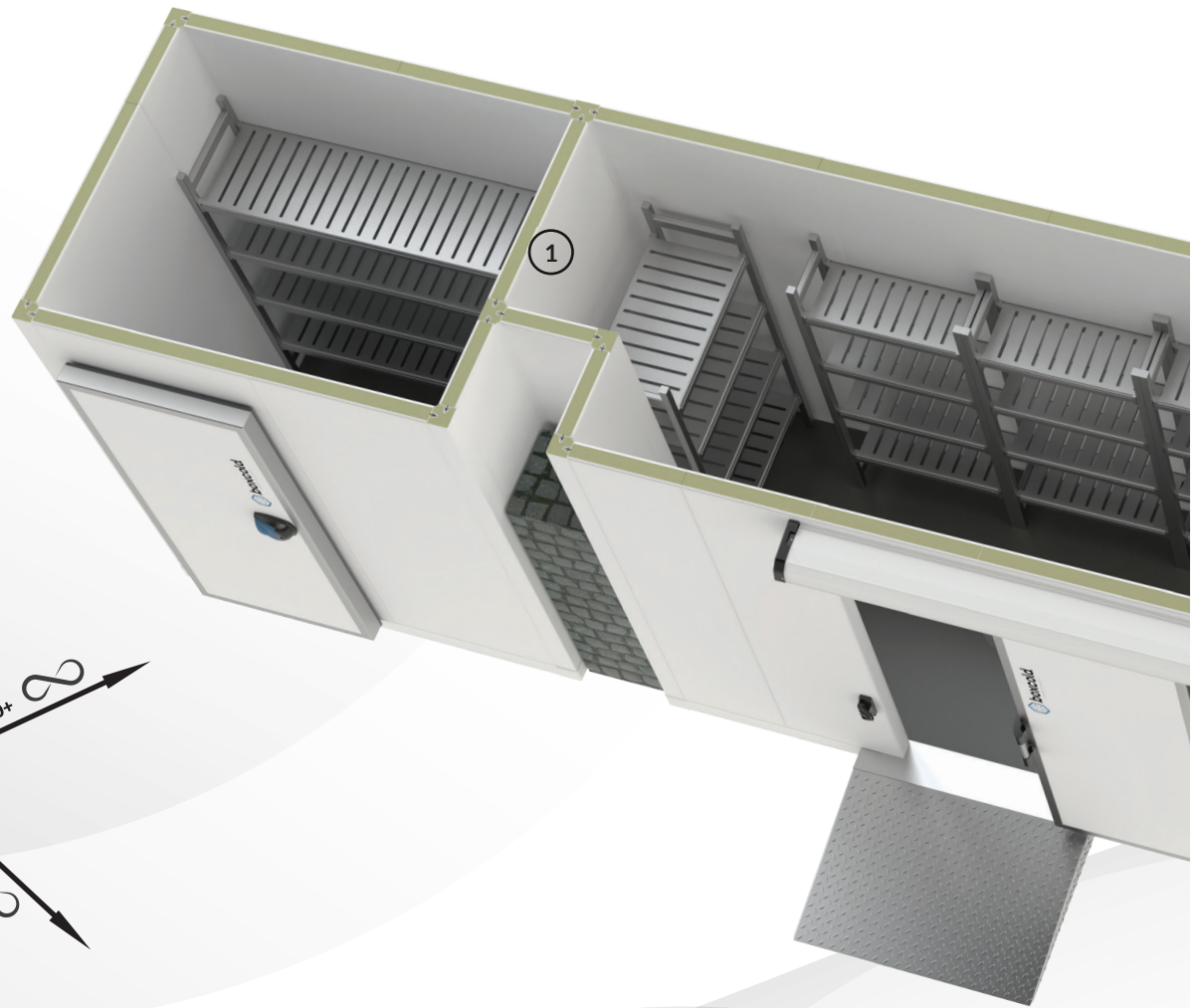
INFINITE SOLUTIONS FOR YOUR COLD ROOM

The main feature of Boxcold cold rooms is their modularity. The modular components allow to realize both small/big complexes and non-standard industrial structures ensuring the single units integrity and their replacement.

MODULARITY



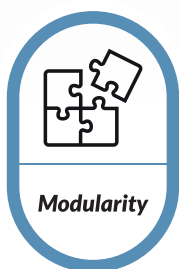
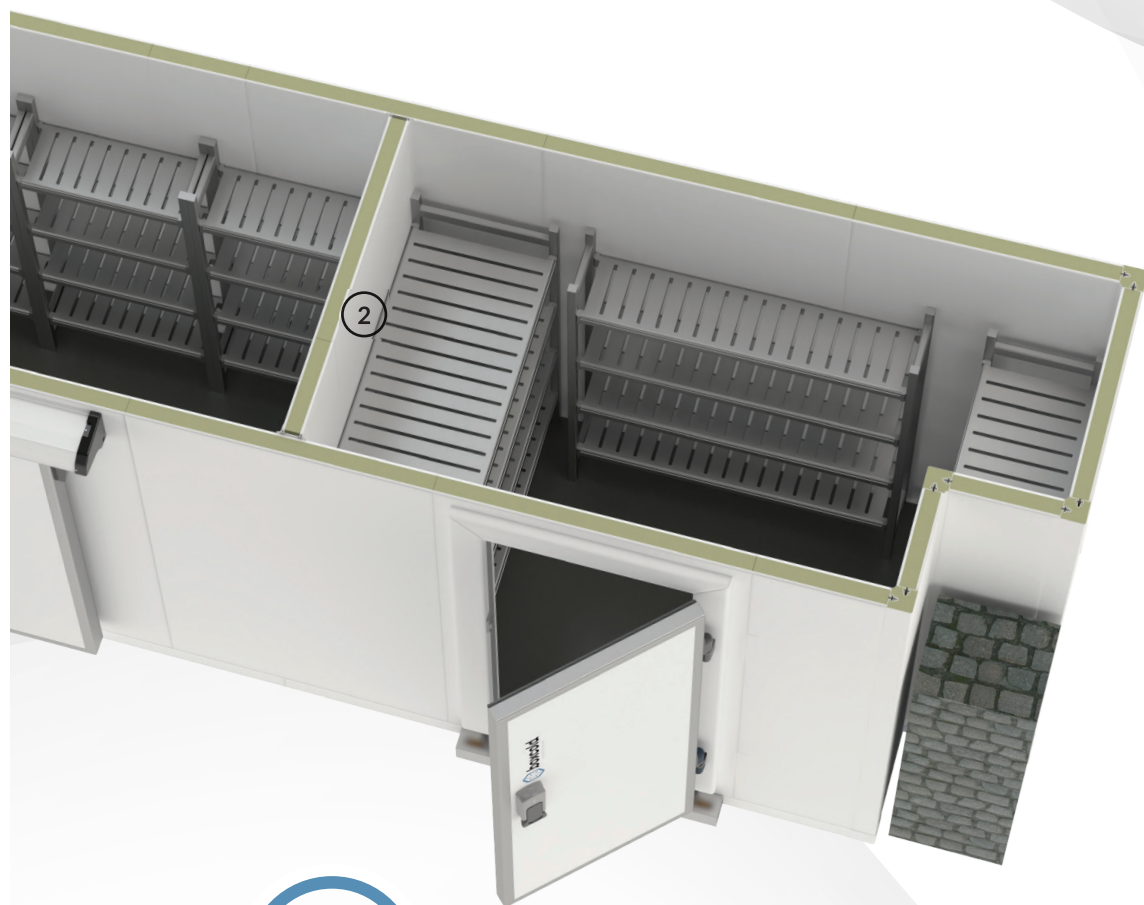
INFINITE SOLUTIONS FOR YOUR COLD ROOM



① FIXED DIVIDING WALL

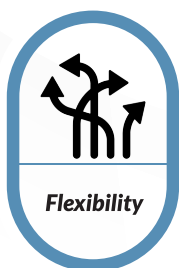


② MOBILE DIVIDING WALL



Modularity

**20 cm step
modularity**



Flexibility

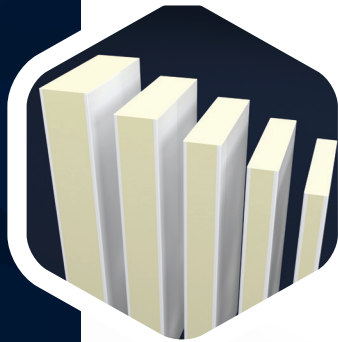
**Obstacles are
no problem**



boxcold
FREDDO SU MISURA



Components



**Variable
thicknesses**
6/8/10/12/14 cm



**Easy to
assemble**



**Ceiling
support**



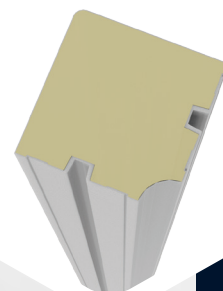
The cold room components are put together by means of an assembly system made of "male-female" eccentric hooks and line-ups that allow a perfect tightening and alignment. Furthermore, during the foaming process, a foam rubber gasket is inserted along the perimeter to guarantee an excellent seal between the panels and the components. The foam rubber is a material used particularly for the insulation of both strongly strained surfaces and thermal bridges.



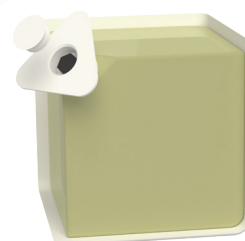
The corner joint system between wall/ceiling panels and floor panels is obtained by 90° foamed edges. These edges are finished by a scratch resistant white galvanized pre-painted steel coated sheet and their insulation is obtained with polyurethane foam (PUR) with a density of 50 Kg/m³. The realisation of the internal junction with a radius of R15mm is designed to eliminate additional PVC profiles complying with the hygiene requirements and ensuring easy-cleaning requests.



Edges



Corner cap



The junction between edge and ceiling is simplified by specific supports that ensure a complete safety assembly and the highest final yield. Particular PUR-corner caps are used between vertical/horizontal edges and floor/ceiling edges in order to avoid possible thermal bridges among the components.

Reaction to fire classification B – s3, d0

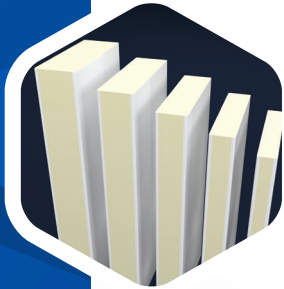
boxcold
FREDDO SU MISURA

boxcold

PANELS



Wall/ceiling panels



Variable thicknesses

- **PANEL THICKNESS**
6/8/10/12/14 cm
- **PANEL WIDTH**
20/40/60/80/100/120 cm

20 cm step modularity

The 20 cm modularity in width, depth and height enable to realize innumerable solutions of cold rooms.



The standard panels have got both an internal and an external finish in scratch resistant white galvanized pre-painted steel coated sheet, thickness 0,5 mm. The insulation among the panels is obtained by means of polyurethane foam (PUR) with a density of 43 Kg/m³.



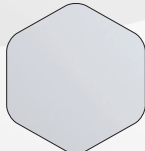
Reaction to fire classification B – s3, d0



Boxcold uses a specific “linear” junction system between the panels and the other components that, unlike the “male-female” one, offers a high product versatility both as a wall panel and as a ceiling panel. Furthermore, this allows to increase and/or modify the cold rooms in any moment according to the needs.

FINISHES

STANDARD

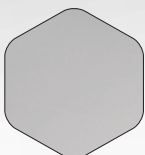


Prepainted steel sheet

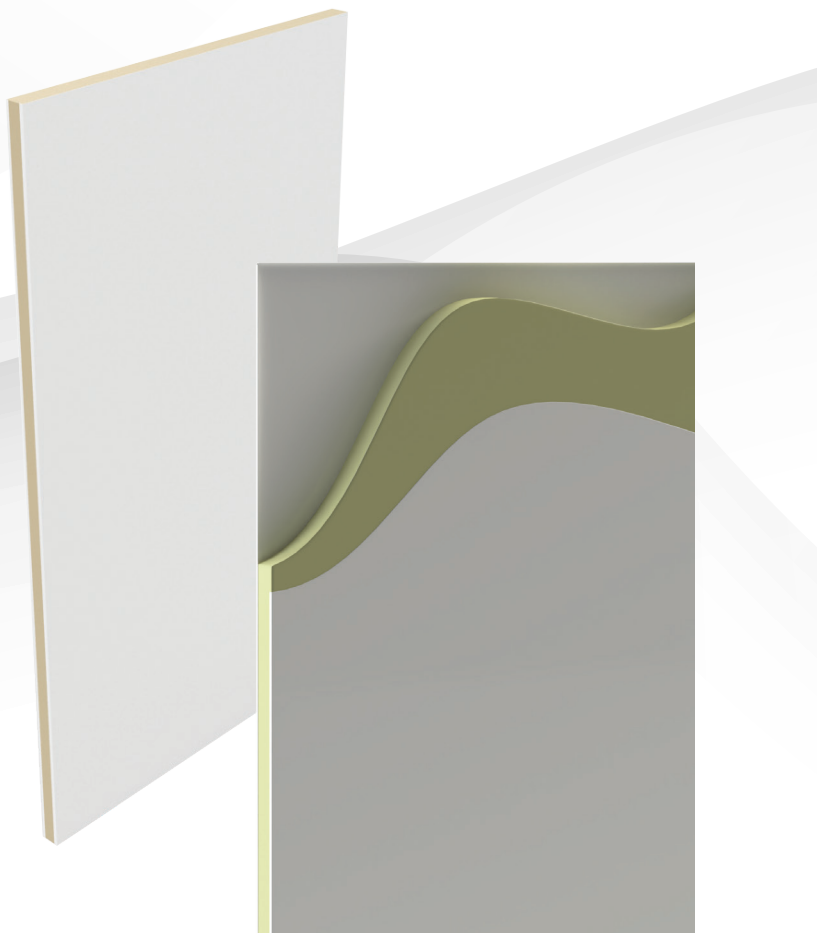
OPTIONAL



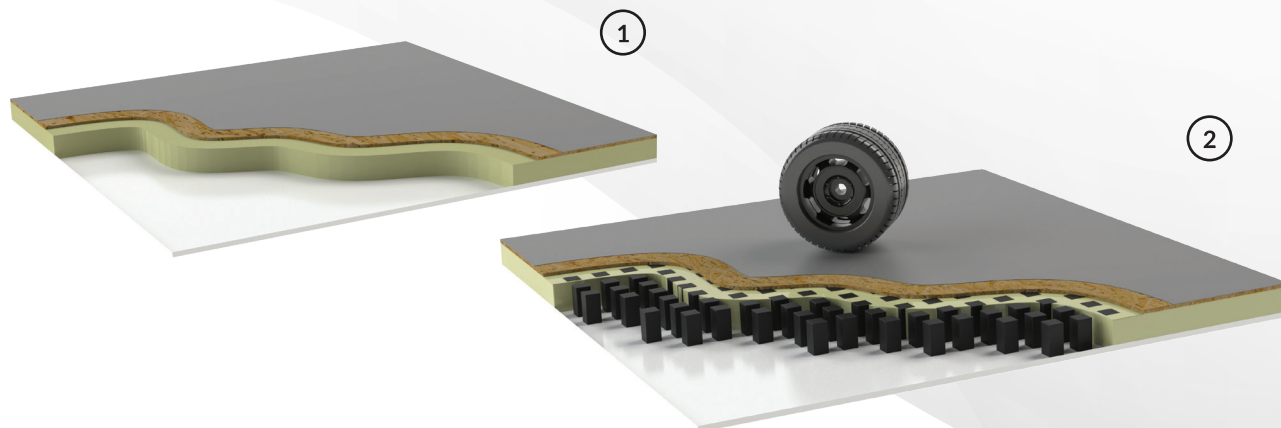
Stainless steel sheet



Plastified steel sheet



Floor panels



All Boxcold floor panels have got an internal finish in anti-slip grey PVC coated steel sheet, an insulation in polyurethane foam (PUR) with a density of 43 Kg/m³ and a lower external finish in scratch resistant white galvanized pre-painted steel coated sheet, thickness 0,6 mm.



Reaction to fire classification B – s3, d0



① STANDARD VEHICULAR FLOOR

0,6 mm steel sheet glued on a 12 mm wood composite

Static capacity 4000 Kg/m²

Dynamic capacity 250 Kg

Punctual capacity 140 Kg



② REINFORCED VEHICULAR FLOOR

0,6 mm steel sheet glued on a 20 mm wood composite and PVC reinforcement spacers foamed in the shape of a honeycomb structure inside the panel

Static capacity 6000 Kg/m²

Dynamic capacity 1500 Kg

Punctual capacity 300 Kg

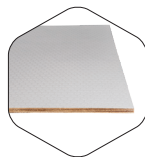
FINISHES

STANDARD

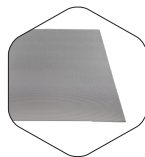


*Anti-slip grey
PVC coated steel
sheet*

OPTIONAL



*Grey phenolic
plywood with
honeycomb pattern*

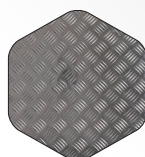


*Stainless steel
sheet with
linen pattern*



Stratified HPL

ACCESSORIES



*Aluminium
diamond plate*



boxcold

DRS DOODS



Hinged door on panel

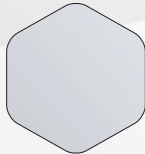


STANDARD

The standard Boxcold door has got specific features designed to obtain the highest possible yield. Each door has got a leaf with an aluminium perimeter profile, hinges with ramp and possibility of height/depth adjustment, an outside handle with key and an inside handle with emergency push button. A silicone rubber gasket along the perimeter is designed to allow the use of the door for cold rooms with and without floor. For doors of thickness 10-12-14 cm (optional for thickness 8 cm), an anti-condensation electric heater along the door clear passage perimeter is supplied by default.

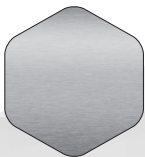
FINISHES

STANDARD



*Prepainted
steel sheet*

OPTIONAL



*Stainless
steel sheet*



Sliding door on panel

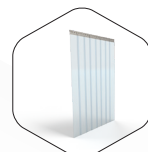


ACCESSORIES

STANDARD



*Internal ramp
in cold rooms
with floor*



*Strip
curtain*

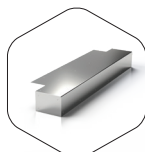


*Double glass
porthole with a
frame in PVC
door thickness
6/8/10/12/14 cm*

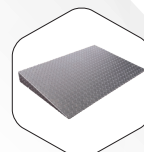
OPTIONAL



*Sliding door
lock*



*Step for
cold room
with floor*



*External
ramp*



Hinged industrial doors with PVC frame and side-frame



Boxcold today boasts a new production line developed thanks to the great expertise of its team and focused exclusively on the industrial door sector, both hinged and sliding type, for an installation on panels and on masonry.



ACCESSORIES



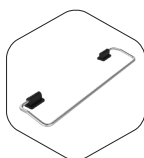
Rail guide for frame and side-frame door
only for installation on panel



Rail guide for flat frame door
only for installation on panel






Double glass porthole with a frame in PVC
door thickness 6/8/10/12/14 cm



Panic bar

STRENGTHS

-  **More reinforced and resistant structure to any type of handling**
-  **Easy assembly**
-  **Adaptability to any type of panel, thickness and masonry**





Sliding industrial doors with PVC frame and side-frame

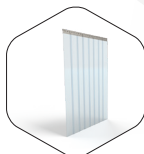




ACCESSORIES



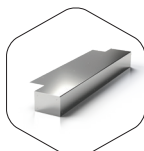
*Sliding door
lock*



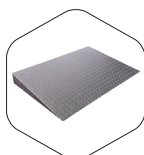
*Strip curtain
for freezer
cold rooms*



*Double glass
porthole with a
frame in PVC*
door thickness
6/8/10/12/14 cm







*Step for
cold room
with floor*



*External
ramp*

STRENGTHS

-  *Clear passages to a maximum of 2500xh3500 mm for sliding doors*
-  *More reinforced and resistant structure to any type of handling*
-  *Easy assembly*
-  *Adaptability to any type of panel, thickness and masonry*



boxcold

THE USE OF FIXED AND MOBILE DIVIDING WALLS ENSURES THE MAXIMUM CUSTOMIZATION OF THE SPACES

A very sensitive area like the food or catering sector has needs especially related to current regulations on food storage and on the customer's use. For this reason, we made it possible to realize a single cold room divided into more spaces thanks to the use of specific dividing walls.

DIVIDING WALLS

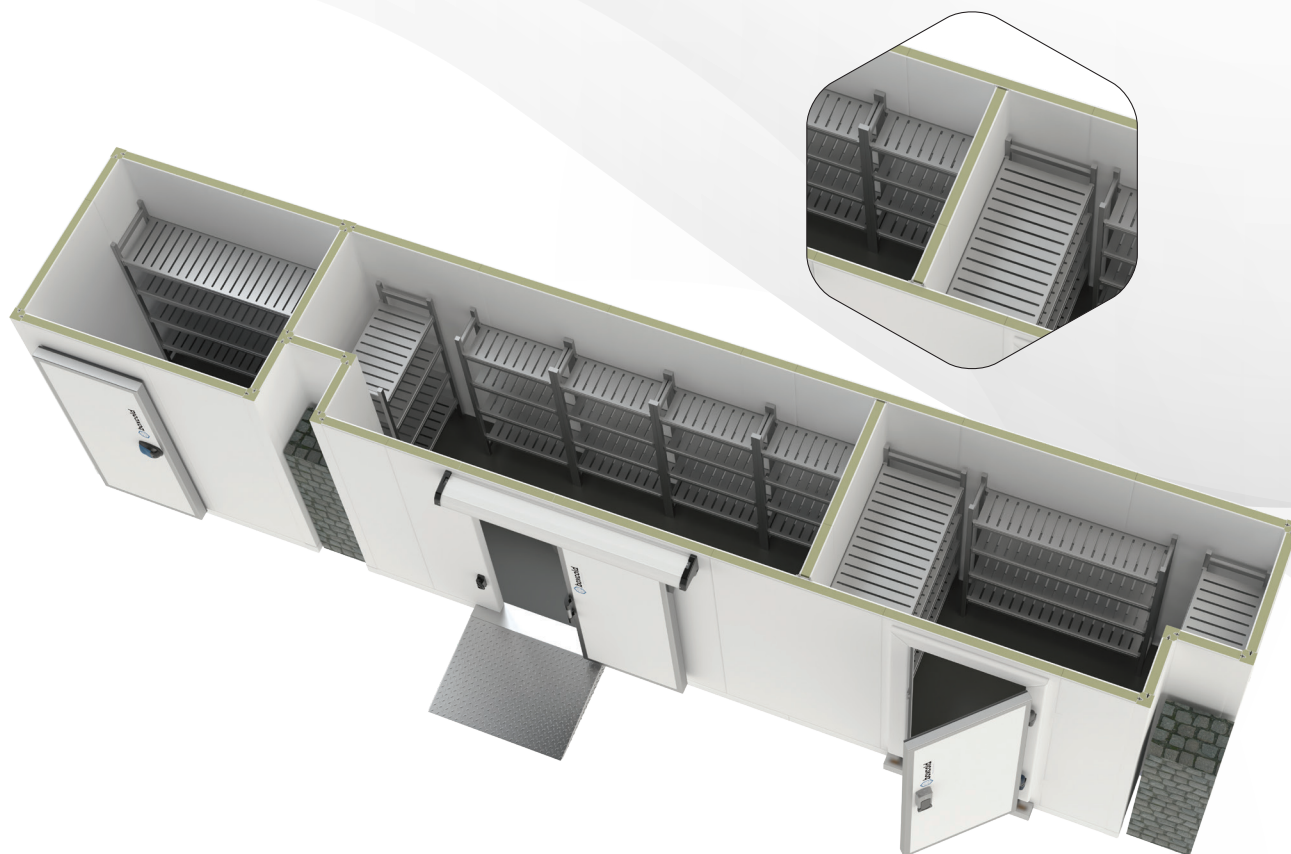


Fixed dividing walls



The fixed dividing walls are made of vertical panels and foamed 3-ways edges of thicknesses 6-8-10-12-14 cm that, once installed, and unlike the mobile dividing walls, can not be moved unless there are structural modifications of the cold room itself. For this reason, they are used to divide two or more cold rooms with Δt MAX 20/25°C.

Mobile dividing walls



The mobile dividing walls are made of vertical panels, dividing angles and PVC profiles of thicknesses 6-8-10 cm. Their uniqueness is that they can be installed or moved in different moments without structural modifications of the cold room. They are used to divide cold rooms with Δt MAX 6/8°C, but also to divide cold rooms with Δt more than 6/8°C making a thermal cut along the perimeter of the dividing wall on the wall, ceiling and floor panels.



boxcold

THE MODULARITY AND THE FLEXIBILITY OF BOXCOLD SYSTEM ALLOW TO ADAPT THE COLD ROOMS TO ANY DIMENSION.

COLD ROOMS



Standard cold rooms



Boxcold cold rooms are entirely manufactured with "Made in Italy" components in order to guarantee an excellent quality level complying with the health and hygiene standards provided by law. The combination of high-quality raw materials and groundbreaking and cutting-edge productive processes – thanks especially to the latest profiling, pressing and foaming technological systems – allows to achieve the best possible production also of standard cold rooms.



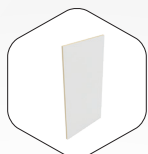
Boxcold cold rooms can be completed and made them work perfectly and immediately thanks to a Coldyfor refrigerating unit – saddle or ceiling monoblocks and split units – and an internal shelving in aluminium and polyethylene.





COMPONENTS

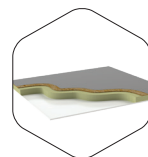
STANDARD



Wall/ceiling panels



Hinged door



Vehicular floor

OPTIONAL



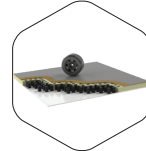
Panels with special finishes like the plastic coated sheet or the 304 stainless steel sheet



Door with rail passage kit



Sliding door



Reinforced floor

ACCESSORIES



Refrigerating unit



Internal shelving



Double cold room with fixed dividing wall

and two different operating temp. $-20^{\circ}\text{C}/+2^{\circ}\text{C}$



Boxcold cold rooms differ for the internal operating temperature: cold room with normal temperature (NT) and cold room with low temperature (LT). The former is usually made in thickness 6 cm and 8 cm, with or without floor – that is optional according to the ease of use and cleaning. The latter is made instead in thickness 10-12-14 cm (also in thickness 8 cm with the addition of the door heating cable kit). Those thicknesses guarantee a better temperature hold below zero, a stability ensured by the use of the floor that, for this type of cold room, is mandatory. For cold rooms with floor, it is possible to customize the structure of the cold room thanks to some options supplied by Boxcold: the flush threshold and the external ramp.



When the customer needs a combination of an NT cold room and an LT one, Boxcold provides several technical solutions – i.e. the possibility to divide a cold room into two or more spaces thanks to the use of fixed dividing walls. However, the conditions required to realize this solution are: both cold rooms must be with or without floor, both must have the same thickness and the same internal height.

- ① SLIDING DOOR
- ② FLUSH THRESHOLD
- ③ STEP
- ④ EXTERNAL RAMP



COMPONENTS

In addition to the standard ones, there are



*Internal ramp
in cold rooms
with floor*



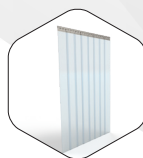
*Heating
cable kit*

ACCESSORIES

In addition to the standard ones, there are



*Pressure relief
valve*



*PVC strip
curtain*

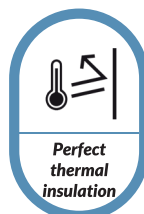
STRENGTHS



*Flexibility
of use*



*Easy
cleaning*



*Perfect
thermal
insulation*



*Compliance
with hygiene
standards*



*Easy
assembly*



boxcold
FREDDO SU MISURA

boxcold
FREDDO SU MISURA

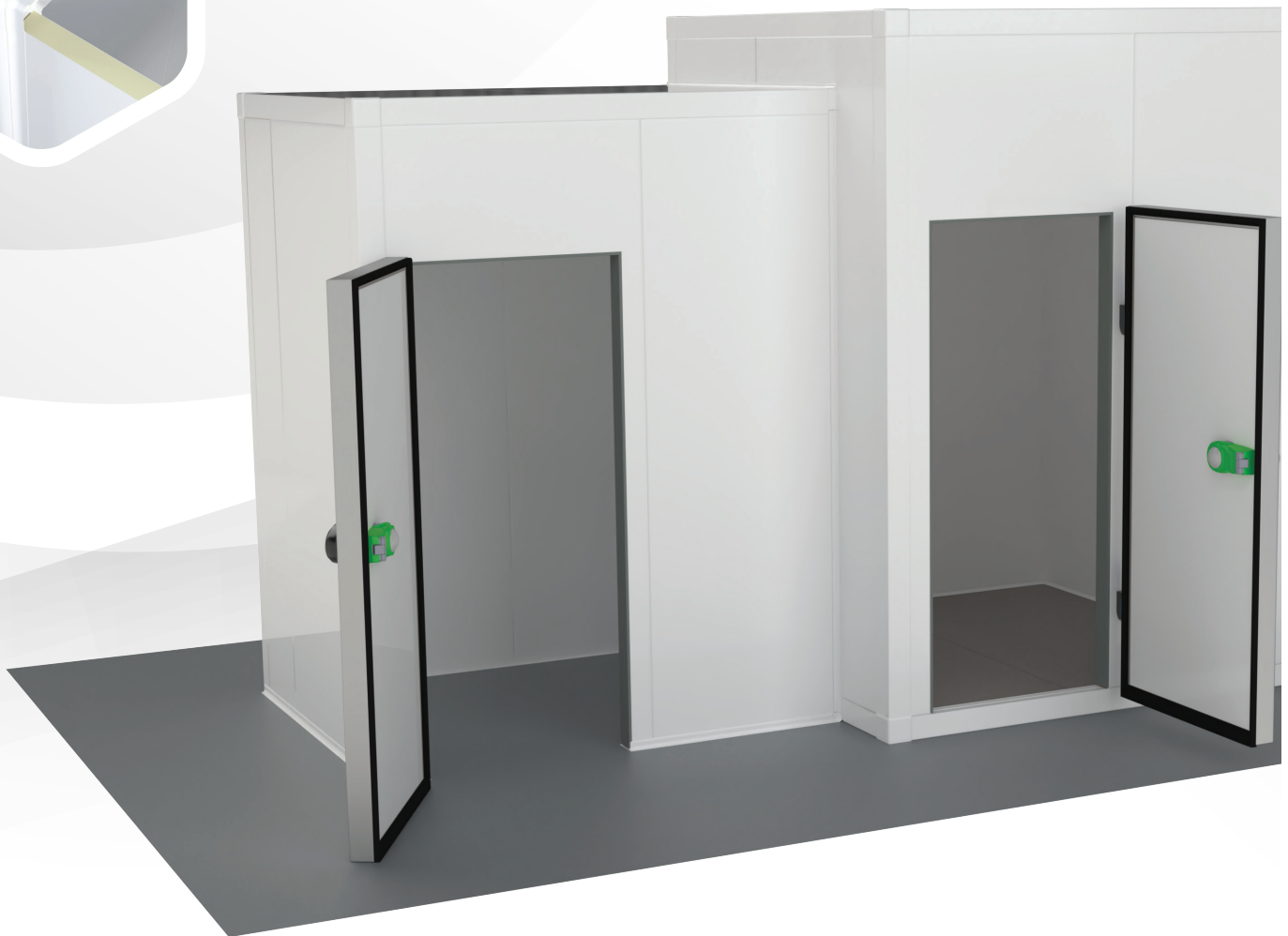


Laid-on cold room



Boxcold engineers and technicians worked to achieve an innovative technical solution that allows to combine a positive and a negative cold room keeping the structural separation of the two goods storage spaces. This Boxcold system is actually made with a NT cold room with or without floor – a choice that represents the real strength of this solution – laid on an independent LT cold room of thicknesses 10-12-14 cm (optional thickness 8 cm) with floor.

This combination is possible thanks to base and dividing angles and to a specific PVC profile installed along the whole perimeter of the laid-on wall allowing both space optimization and cost savings.



COMPONENTS

In addition to the standard ones, there are



PVC profile



Basic corner



Dividing corner

ACCESSORIES

As the standard cold room

STRENGTHS

- * *Innovative technical solution*
- * *Considerable cost saving*
- * *Space optimization*
- * *Combination of NT/LT*
- * *Better storage*





Stainless steel cold room





STRENGTHS

-  *Great corrosion resistance*
-  *High hygiene standards*
-  *Great solution for fish products storage*



Boxcold greatest boast and strength is the stainless steel cold room. It is made of 304 stainless steel with anti-fingerprint scotch brite finish, thickness 0,5 mm used to cover all the cold room components – panels, doors, edges – internally, externally or both sides. This solution is adopted to store fish products because the stainless steel ensures different technical and functional advantages as regards the corrosion resistance and the health and hygiene standards, guarantying an ideal food storage and a shelf life preservation.



Boxcold cold rooms can be made - on demand - of AISI 304 stainless steel with anti-fingerprint scotch brite finish.





Cold room with special corners/walls designed to avoid structural obstacles

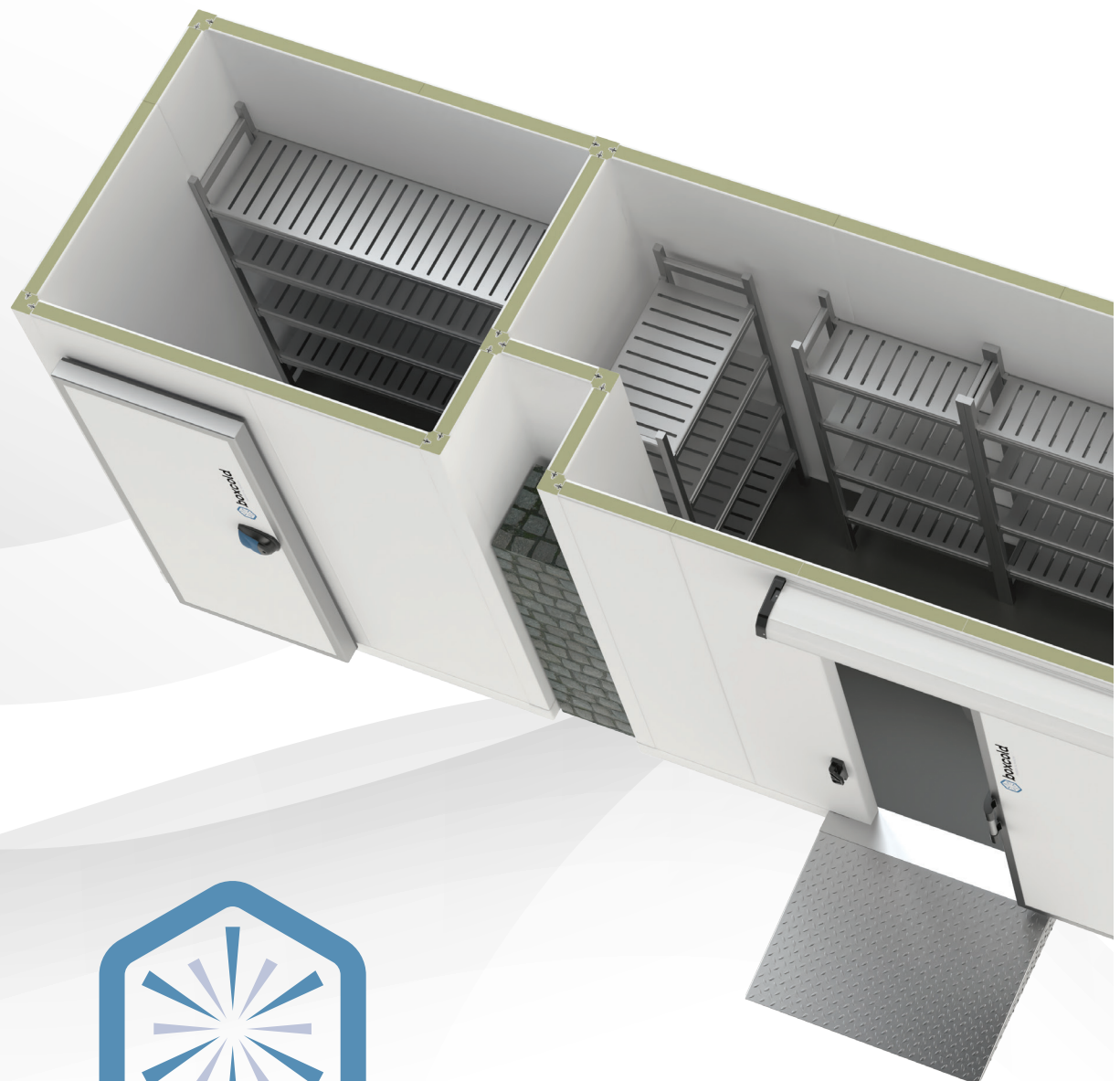


Boxcold cold rooms can easily be installed in every space thanks to their high flexibility and modularity.

Actually, since they are designed for hotels, canteens, big restaurants, commercial spaces, but also for hospitals, drugstores and industrial environments, the cold rooms must be adapted to the structures and to the dimensions of the spaces where they must be installed. For this reason, all Boxcold models can be customized

according to the needs.

In the installation space where there are beams, pillars, special walls and/or corners, Boxcold cold rooms offer the possibility to cover or bypass the obstacle by means of "special" panels (non-standard 20 cm modularity).



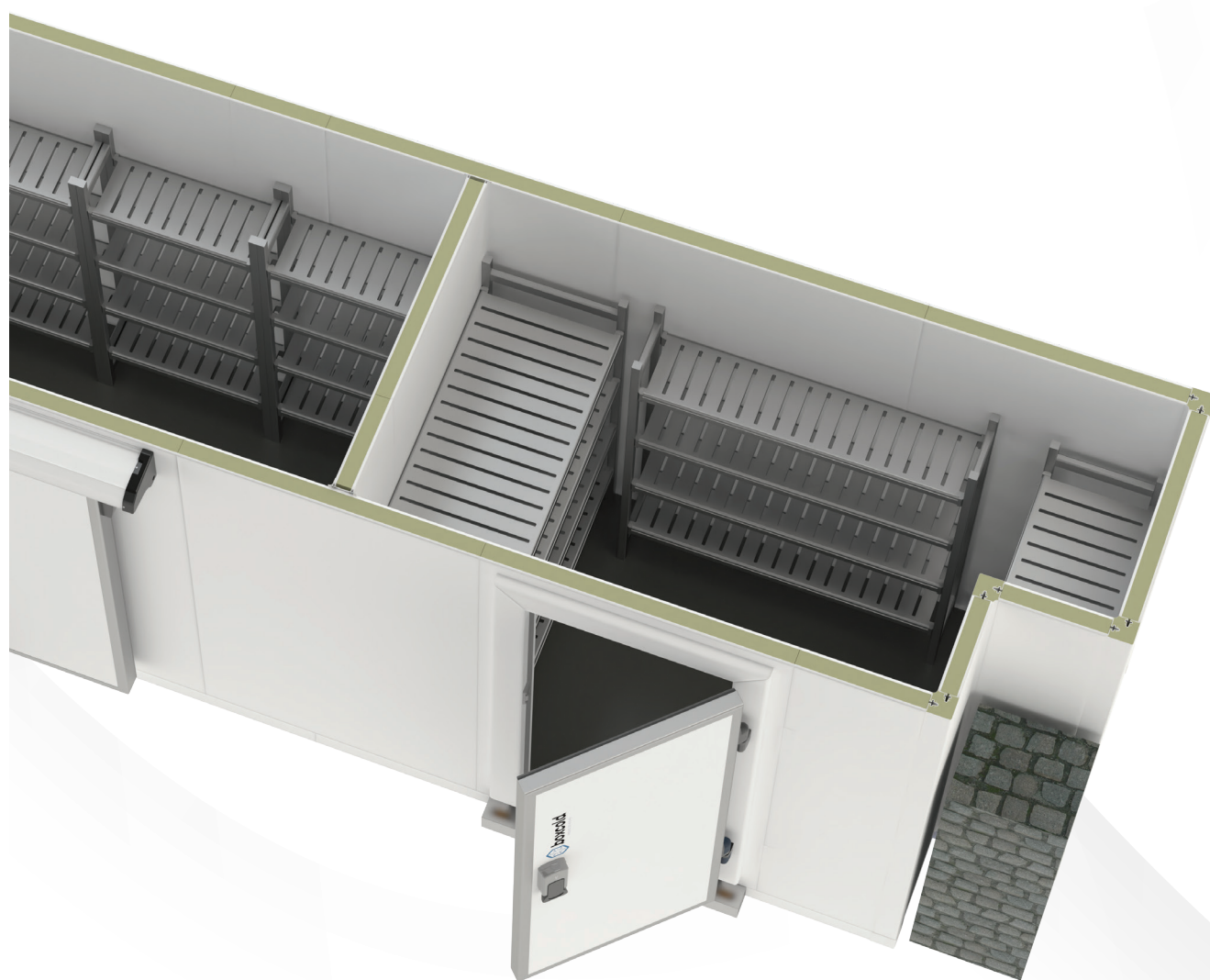
boxcold
FREDDO SU MISURA



One or more obstacles can be avoided at the corner or along the wall of a single cold room.



Therefore, the technical solutions that can be realized with Boxcold cold rooms are potentially infinite.





Cold room with glass doors



The refrigeration is a large market and Boxcold takes all its paths considering every possible solution to achieve excellent products for every need. For this reason, Boxcold supplies also glass doors that can be easily and quickly mounted by any cold room installer thanks to the "easy plug-in" design. Those who choose these products can count on both speed installation and long-term reliability.



SOLUTIONS

1

NT glass door
with frame H 1639 mm e H 1844 mm
and doorway clear passage
761*H 1601 mm e 761*H 1806 mm
(from 1 to 5 doorways).

Handle neon lighting inside
the door profile.

2

LT glass door
with frame H 1639 mm e H 1844 mm
and doorway clear passage
761*H 1601 mm e 761*H 1806 mm
(from 1 to 5 doorways).

Handle neon lighting inside the door
profile

STRENGTHS



Completely transparent
mullions that allow to see the
products stored inside the cold
room from any perspective.



Best energy saving solution for
big retail stores with long aisles
for fresh food.



Completely transparent doors
with certified reliability and
durability.



Designed for maximum
attraction thanks to doors
completely made of glass.



boxcold
FREDDO SU MISURA

boxcold
FREDDO SU MISURA

boxcold

CABINETS



Modular cabinet



Customers' needs are different according to their activities and to the requirements that the company considers important. Boxcold works to meet also the most difficult requests and to diversify its products. For this reason, a new concept of cold room was developed: the modular cabinet that can offer maximum functionality in small spaces. The thickness of a modular cabinet can be 6-8-10 cm according to the needs, the operating temperatures and the type of storage requested by the production.





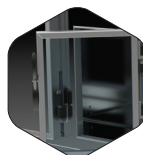
COMPONENTS



Panels
cm 80



Hinged door
cm 61x190h



Glass or panel half doors



ACCESSORIES



Grids kit



Pastry kit



The modular cabinet can be realized in several ways. It can be designed with one or more doors, one or more glass and/or panel half-doors and with specific components (doors and half-doors with an elegant latch handle type different from the standard) and accessories (grids kit, pastry kit etc.) that offer the customer a complete product.



boxcold



PRODUCTION



Cold room production



The projects take shape in the production department of the Boxcold plants that cover a wide area of 70.000 mq, 10.000 mq of which are dedicated to the actual productive cycle and where the expertise, the experience and the dedication of qualified workers and technicians play a role in the careful production and testing process to always guarantee a reliable product. The whole production process is sector-specific, with areas specialized and focused on the several processing steps.





✱ STORAGE

✱ METAL SHEET PROFILING

The coils processing in the different dimensions and finishes supplied by Boxcold is carried out by means of a CNC profiling machine.

✱ PRESSING AND FOAMING

There are two new lines specialized in the pressing and foaming process of panels and edges equipped with the latest high-pressure foaming systems.

✱ AUTOMATED WAREHOUSE

The automated warehouse with mobile racking covers an area of 1.500 mq and it is used for the storage of all the cold room components.

✱ PACKAGING

The product packaging on pallet, both horizontal and vertical, is realized with extreme care after an accurate quality check.

✱ SHIPMENT

At this stage, Boxcold cold room is ready to leave the factory and to be shipped worldwide.

✱ DISTRIBUTION

France, Sweden, Poland, Greece, Cyprus, Bulgaria, Malta, England, Netherlands, Denmark, Germany, Albania, Morocco, Île de la Réunion, Kenya, Lebanon, Qatar, Kuwait, Saudi Arabia, Mauritius.



CERTIFICATIONS



Dasa-Räger

IE-0620-01

Certificato n.
Certificate n.

2020-06-23

Data di prima emissione
First issue date

2023-06-22

Data di ultima emissione
Last issue date

2026-06-22

Data di scadenza
Expiry date

C.E.O.

Dasa-Räger S.p.A.
Italy - 00071 Pomezia - Roma
Via dei Castelli Romani, 22
Tel. +39-0691622002
Fax +39-069107126
www.dasa-raeger.com



ISO 14001

Registri degli Accordi di Prolungamento
LA, SRF e RAC
Registri of CA, SRF and RAC
Related Reciprocity Agreements

Dasa-Räger S.p.A.

certifica che il sistema di gestione per l'ambiente di
certifies that the environmental management system of

Boxcold S.r.l.

Italia - 73010 - Veglie (LE) - Via Provinciale Veglie-Leverano 1

E' stato verificato e trovato conforme ai requisiti dello standard
Has been assessed and found in compliance with the standard requirements

UNI EN ISO 14001:2015

Per le seguenti attività aventi come oggetto
Progettazione e produzione di celle frigorifere (profilatura lamiera, imbastitura e allestimento stampi, pressatura, schiumatura poliuretanica, Palettizzazione, immagazzinamento)

For the following activities having as object
Design and production of cold rooms (sheet metal profiling, tacking and mold preparation, pressing, polyurethane foaming, palletisation, storage)

Settore/i - Sector/s 17

Informazioni puntuali e aggiornate circa lo stato della presente Certificazione sono disponibili all'indirizzo www.dasa-raeger.com.
Punctual and updated information regarding this Certification is available at www.dasa-raeger.com.
Certificazione rilasciata in conformità al Regolamento Tecnico ACCREDIA RT - 09.
Certification issued in compliance with Technical Regulation ACCREDIA RT - 09.

La validità del presente Certificato è subordinata al rispetto delle prescrizioni del Regolamento di Certificazione Dasa-Räger, dei requisiti della Norma ISO 14001:2015, ad un programma di sorveglianza annuale e ad un riesame ogni tre anni.

The validity of this Certificate is subordinated by a full respect of that prescribed in Dasa-Räger's Certification Regulation, of ISO 14001:2015 Standard requirements, to an annual surveillance programme and to a three yearly re-assessment.



Dasa-Räger

IQ-0620-06

Certificato n.
Certificate n.

2020-06-23

Data di prima emissione
First issue date

2023-06-22

Data di ultima emissione
Last issue date

2026-06-22

Data di scadenza
Expiry date

C.E.O.

Dasa-Räger S.p.A.
Italy - 00071 Pomezia - Roma
Via dei Castelli Romani, 22
Tel. +39-0691622002
Fax +39-069107126
www.dasa-raeger.com



ISO 9001

Registri degli Accordi di Prolungamento
RA, SRF e RAC
Registri of CA, SRF and RAC
Related Reciprocity Agreements

Dasa-Räger S.p.A.

certifica che il sistema di gestione per la qualità di
certifies that the quality management system of

Boxcold S.r.l.

Italia - 73010 - Veglie (LE) - Via Provinciale Veglie-Leverano 1

E' stato verificato e trovato conforme ai requisiti dello standard
Has been assessed and found in compliance with the standard requirements

UNI EN ISO 9001:2015

Per le seguenti attività aventi come oggetto
Progettazione e produzione di celle frigorifere

For the following activities having as object
Design and production of cold rooms

Settore/i - Sector/s 17

Informazioni puntuali e aggiornate circa lo stato della presente Certificazione sono disponibili all'indirizzo www.dasa-raeger.com.
Punctual and updated information regarding this Certification is available at www.dasa-raeger.com.

Riferirsi alla documentazione del Sistema di Gestione Qualità dell'Organizzazione per i dettagli delle singole esclusioni ai requisiti della Norma ISO 9001:2015.
La validità del presente Certificato è subordinata al rispetto delle prescrizioni del Regolamento di Certificazione Dasa-Räger, dei requisiti della Norma ISO 9001:2015, ad un programma di sorveglianza annuale e ad un riesame ogni tre anni.

Refer to the Documents of the Quality Management System of the Organization for details regarding the exclusions to ISO 9001:2015 Standard requirements.
The validity of this Certificate is subordinated by a full respect of that prescribed in Dasa-Räger's Certification Regulation, of ISO 9001:2015 Standard requirements, to an annual surveillance programme and to a three yearly re-assessment.

RAPPORTO DI CLASSIFICAZIONE N. 327032/9353/CPR

CLASSIFICATION REPORT No. 327032/9353/CPR

emesso da Istituto Giordano in qualità di laboratorio di prova notificato (n. 0407)
ai sensi del Regolamento 305/2011/UE del Parlamento Europeo e del Consiglio del 09/03/2011

*issued by Istituto Giordano in the capacity of notified test laboratory (No. 0407)
pursuant to Regulation 305/2011/EU of the European Parliament and of the Council of 9 March 2011*

Luogo e data di emissione: Bellaria-Igea Marina - Italia, 06/08/2015

Place and date of issue:

Committente: BOXCOLD DIVISIONE FRIGOClima - Provinciale Veglie-Leverano - 73010 VEGLIE (LE)
Customer: - Italia

Numero e data della commessa: 66174, 13/04/2015

Order number and date:

Oggetto: classificazione al fuoco dei prodotti e degli elementi da costruzione - Parte 1: Classifica-
Purpose: zione in base ai risultati delle prove di reazione al fuoco secondo la norma UNI EN 13501-1:2009, con riferimento alla norma armonizzata UNI EN 14509:2013

*fire classification of construction products and building elements - Part 1: Classification using data from re-
action to fire tests in accordance with standard UNI EN 13501-1:2009 and with reference to harmonized
standard UNI EN 14509:2013*

Provenienza del campione: campionato e fornito dal Committente

Origin of sample: sampled and supplied by the Customer

Denominazione del prodotto*.

Product name.*

"PANNELLO ISOLANTE TIPO SANDWICH BOX".

Definizione del prodotto classificato.

Definition of classified product.

Il prodotto PANNELLO ISOLANTE TIPO SANDWICH BOX è definito come "pannelli isolanti autoportanti a dop-
pio rivestimento con paramenti metallici con anima in poliuretano espanso rigido PUR".

*The product PANNELLO ISOLANTE TIPO SANDWICH BOX is defined as a "self-supporting insulation panel with double coverings, metal
facings and rigid polyurethane foam PUR core".*

(*) secondo le dichiarazioni del Committente.
according to information supplied by the Customer.



LAB N° 0021

Comp. AV
Revis. AG

Il presente rapporto di classificazione è composto da n. 7 fogli, dalla documentazione tecnica del Committente ed è emesso
in formato bilingue (italiano e inglese); in caso di dubbio, è valida la versione in lingua italiana.
*This classification report is made up of 7 sheets, the Customer's technical documentation and it is issued in a bilingual format (Italian and English);
in case of dispute the only valid version is the Italian one.*

Foglio / Sheet
1 / 7

CLAUSOLE: il presente documento si riferisce solamente al campione o materiale sottoposto a prova e non può essere riprodotto parzialmente, salvo approvazione scritta dell'Istituto Giordano.
CLAUSES: This document relates only to the sample or material tested and shall not be reproduced except in full without Istituto Giordano's written approval.

Classificazione e campo di applicazione.

Classification and field of application.

Riferimento di classificazione.

Reference of classification.

Questa classificazione viene definita in accordo con la norma UNI EN 13501-1:2009.

This classification is assigned in accordance with standard UNI EN 13501-1:2009.

Classificazione.

Classification.

Il prodotto "PANNELLO ISOLANTE TIPO SANDWICH BOX", in relazione al suo comportamento di reazione al fuoco, è classificato:

The product "PANNELLO ISOLANTE TIPO SANDWICH BOX" in relation to its reaction to fire behaviour is classified:

B

La classificazione aggiuntiva in relazione alla produzione di fumo è:

The additional classification in relation to smoke production is:

s3

La classificazione aggiuntiva in relazione alla cadute di gocce/particelle incendiate è:

The additional classification in relation to flaming droplets/particles is:

d0

La classificazione finale di reazione al fuoco del prodotto da costruzione è:

The final reaction to fire classification of the construction product is:

Classificazione / Classification: B - s3, d0

Campo di applicazione.

Field of application.

Questa classificazione è valida per i seguenti parametri del prodotto*:

This classification is valid for the following product parameters:*

Spessore Thickness	≥ 60 mm
-----------------------	---------

Il Direttore Tecnico della sezione CPD

CPD Department Technical Manager

(Dott. Ing. Giuseppe Persano Adorno)

Giuseppe Persano Adorno

Il Responsabile Tecnico

Chief Test Engineer

(Dott. Gian Luigi Baffoni)

Gian Luigi Baffoni

Il Responsabile del Laboratorio
di Reazione al Fuoco

Head of Reaction to Fire Laboratory

(Dott. Gian Luigi Baffoni)

Gian Luigi Baffoni

L'Amministratore Delegato

Chief Executive Officer

(Dott. Arch. Sara Lorenza Giordano)

Sara Lorenza Giordano

Info & contacts

boxcold

Prov.le Veglie - Leverano
73010 Veglie (Le) - ITALY

info@boxcold.it

+39 0832 968423

SALES DEPT.

commerciale1@boxcold.it
commerciale3@boxcold.it

EXPORT SALES DEPT.

estero2@boxcold.it
estero1@boxcold.it

LOGISTICS DEPT.

logistica@boxcold.it

ACCOUNTING DEPT.

amministrativo@boxcold.it

TECHNICAL DEPT.

tecnico2@boxcold.it
tecnico5@boxcold.it

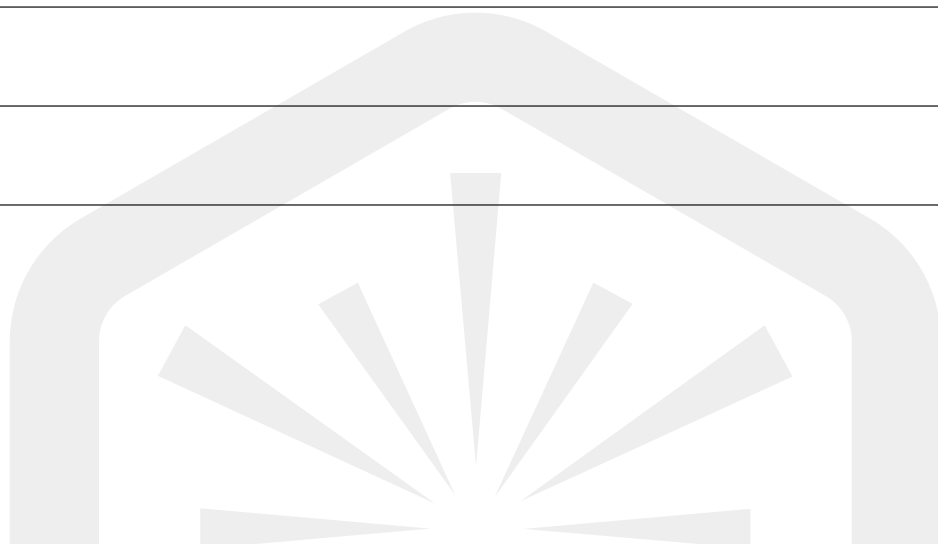


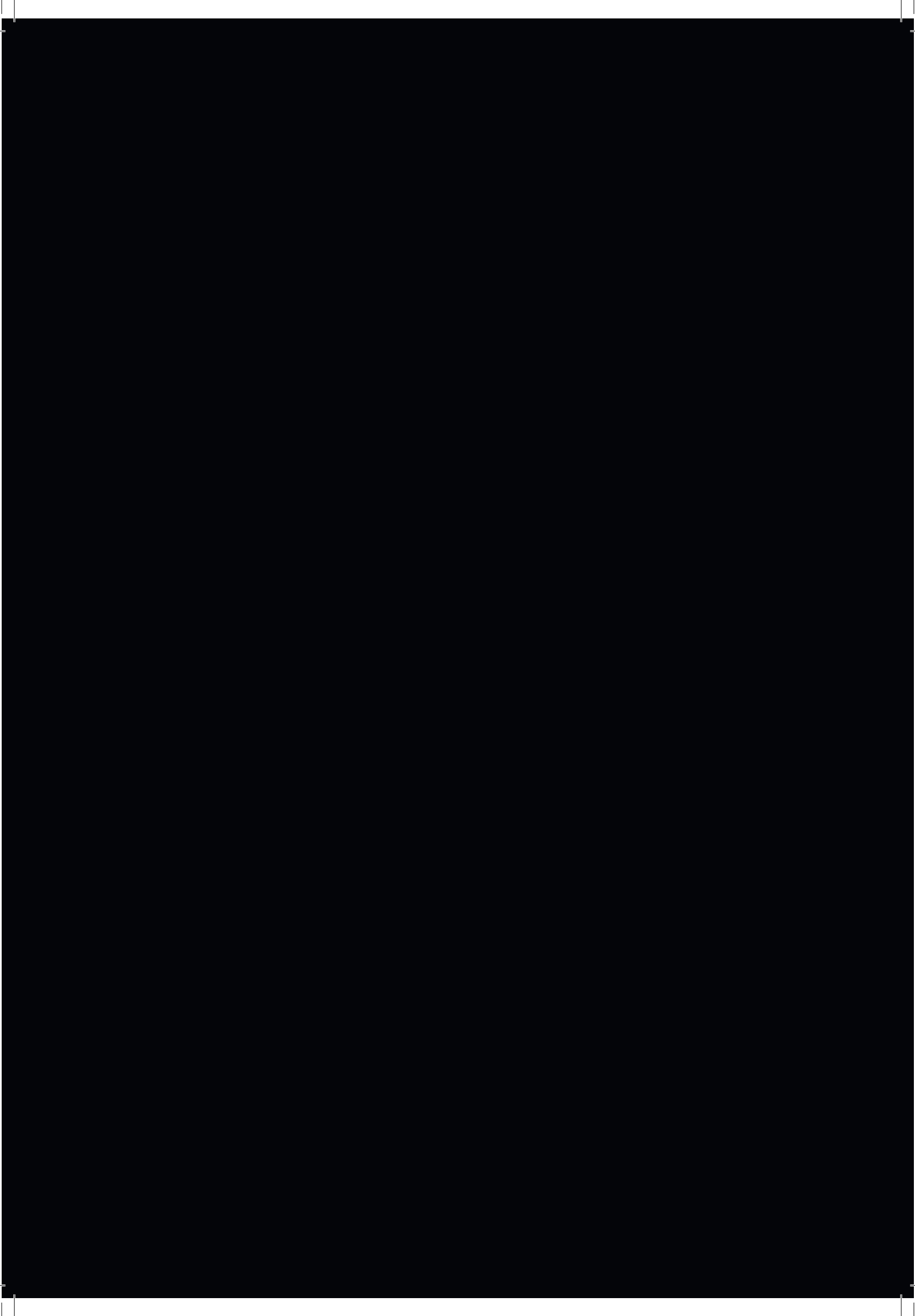
www.boxcold.it

Notes

boxcold

FREDDO SU MISURA





www.boxcold.it



boxcold
FREDDO SU MISURA

MAIN OPERATING OFFICES

Boxcold Srl
Prov.le Veglie - Leverano
73010 Veglie (Le) - ITALY

info@boxcold.it

+39 0832 968423